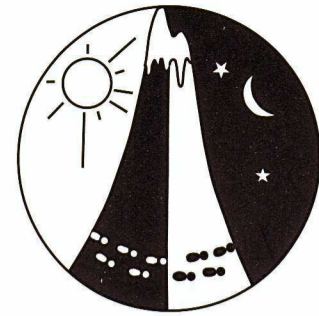




Deja Doo

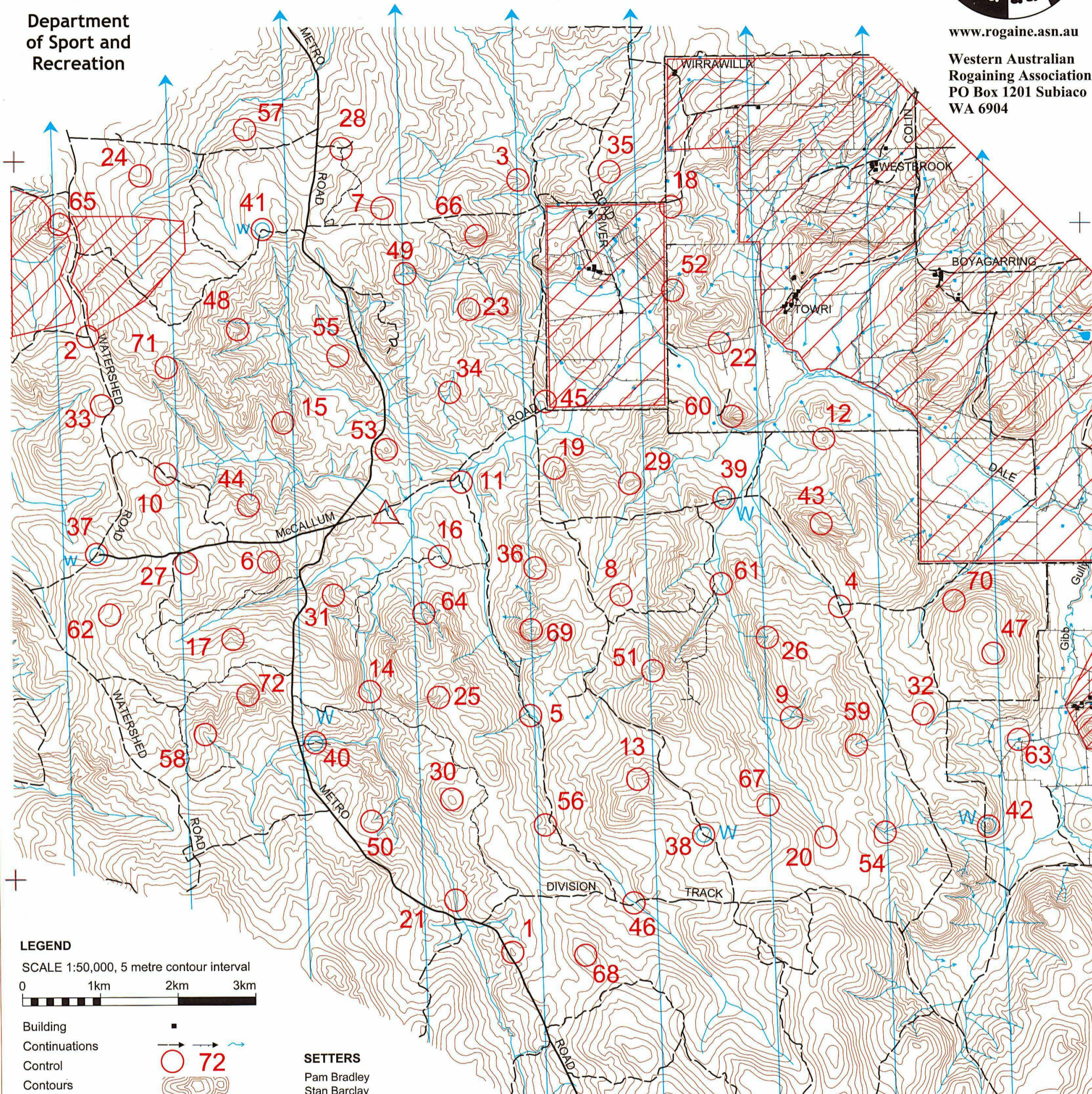
WARA 12 Hour Rogaine 12 April 2003



Department of Sport and Recreation

www.rogaine.asn.au

Western Australian Rogaining Association
PO Box 1201 Subiaco
WA 6904



LEGEND

SCALE 1:50,000, 5 metre contour interval
0 1km 2km 3km

- Building
- Continuations
- Control
- Contours
- Dam
- Fence
- Hash House
- Magnetic North Line
- Out of Bounds
- Road Gravel
- Major, Minor
- Track
- Watercourse
- Water Drop

SETTERS

Pam Bradley
Stan Barclay
Dave Hartley

VETTERS

Ken Martin
Roy Stone
Shane Lewis
Martin Gray

THANKS TO THE FARMERS

Ralph and Nina Schilling
Vinny Pike
Peter and Joe Tomeos
Also thanks to: Brent and Judy Schilling
(Land that was offered but not used)

CALM

Thank you to the Department of Conservation and Land Management for permission to use the land. A special thanks to Jamie Ridley for his valuable assistance.

Incorporating the



2003 Junior Cadet Challenge

This map was produced using OCAD. Data Supplied by DOLA and used under copy licence "393/93"

Possession of this map does not give right of entry to this area.

2003 Deja Doo Autum 12 Hour Rogaine 12 April

No.	Description	Points	No.	Description	Points	Important Information
1	The knoll	20	43	Head of a gully	60	Control Cards From 0930 Saturday
2	The road junction 70m @290 degrees	20	44	Head of the gully	60	
3	The spur	20	45	A boulder cluster	60	
4	The track junction	20	46	The watercourse - top of large dead tree	60	
5	A rocky pool on the creek	20	47	The summit	60	
6	Head of the broad gully	20	48	The spur	60	
						Briefing
7	The watercourse	30	49	The watercourse	70	0945 Saturday
8	The gully	30	50	Head of the watercourse	70	Start 1000 Saturday
9	The southern watercourse	30	51	The knoll	70	
10	The broad gully - on the track	30	52	The watercourse	70	Finish 2200 Saturday
11	The track watercourse crossing	30	53	The summit	70	
12	The knoll	30	54	A watercourse junction	70	Hash House Opens at 1600 Sat Closes at 2300 Sat
13	The spur	30				
14	The bend in the watercourse	30	55	The small gully	80	Opens 0630 Sun Closes 0830 Sun
15	The summit	30	56	The small gully	80	
16	The track bend	30	57	The gully	80	Sunset 1756
17	The gully - western edge	30	58	Head of the watercourse	80	
18	The knoll - eastern edge	30	59	The gully	80	Moonrise 1523
			60	The spur	80	
19	The spur	40				Late Penalty 10 points per minute or part minute
20	Head of the broad gully	40	61	A bend in the watercourse	90	
21	A track watercourse crossing	40	62	100 x 80 Metres clearing - eastern edge	90	Controls Used 72
22	The fence junction - on a tree	40	63	The dam north west corner	90	
23	The summit	40	64	Between the creeks	90	Total Points 3960
24	The spur	40	65	The rocky knoll	90	
25	The gully	40	66	A rocky outcrop	90	
26	Head of the watercourse - a boulder cluster	40				
27	The broad knoll	40	67	The broad spur	100	
28	The track junction, 100 Metres @ 335 degrees	40	68	The broad summit	100	
29	The knoll	40	69	The rocky summit	100	
30	The summit	40	70	The gully	100	
			71	A boulder cluster - about a dozen 2 to 4 metre high boulders	100	
31	Head of the gully	50	72	The spur - on a large rock - danger 4 metre drop on south side	100	
32	The knoll	50				
33	The spur - on a small knoll	50				
34	The watercourse	50				
35	The gully	50				
36	The spur	50				
37	The road junction - behind the log pile (Water drop)	50				
38	A track junction (Water drop)	50				
39	A knoll (Water drop)	50				
40	Fallen tree on the track (Water drop)	50				
41	The track bend NE side (Water drop)	50				
42	The knoll (Water drop - on the track)	50				

Water Drops: At Controls 37 38 39 40 41 42

Patrolled Roads:

Metro Road, Watershed Road, Division Track, McCallum Road